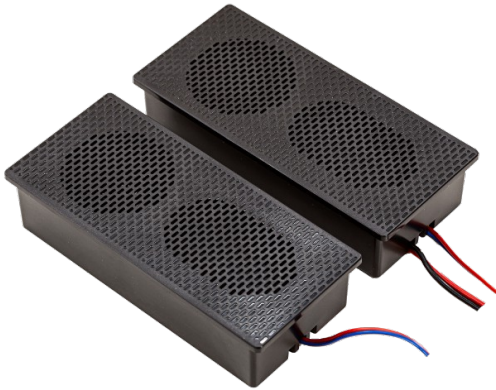


SP-BT01 Series

Bluetooth speakers for mirrors



■ Application:

- Bluetooth 5.0 music playback
- Dual-channel stereo output
- Compact size and easy to install



ELECTRICAL SPECIFICATION

MODEL	SP-BT01
Input voltage	12V
Power (max.)	9W
Dimensions	108 x 49 x 25 (L x W x H)

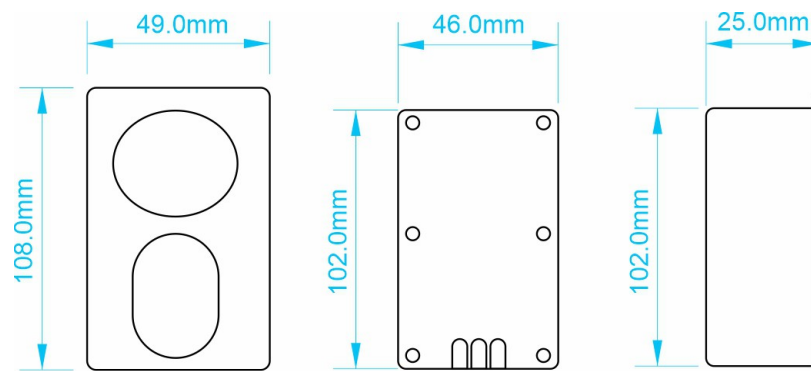
WORKING ENVIRONMENT

Working temperature	-25°C ÷ 60°C
Working humidity	10 ÷ 90% RH non-condensing
Storage temperature and humidity	-20°C ÷ 85°C, 5 ÷ 90% RH non-condensing
Protection class	IP54

OPERATION METHOD

After power connected for the first time, Bluetooth speaker prompts and play "Ready for connection" indicating the speaker has been turned on. Turn on the Bluetooth function on your phone and search for device "AST9K07" and connect it. When it plays back "Bluetooth Connected" then they are connected successfully and are ready for playing music. After Bluetooth has been turned off on the phone, it plays back "Bluetooth Disconnect" indicating the connection has been discontinued and this speaker is ready to reconnect.

MECHANICAL SPECIFICATION

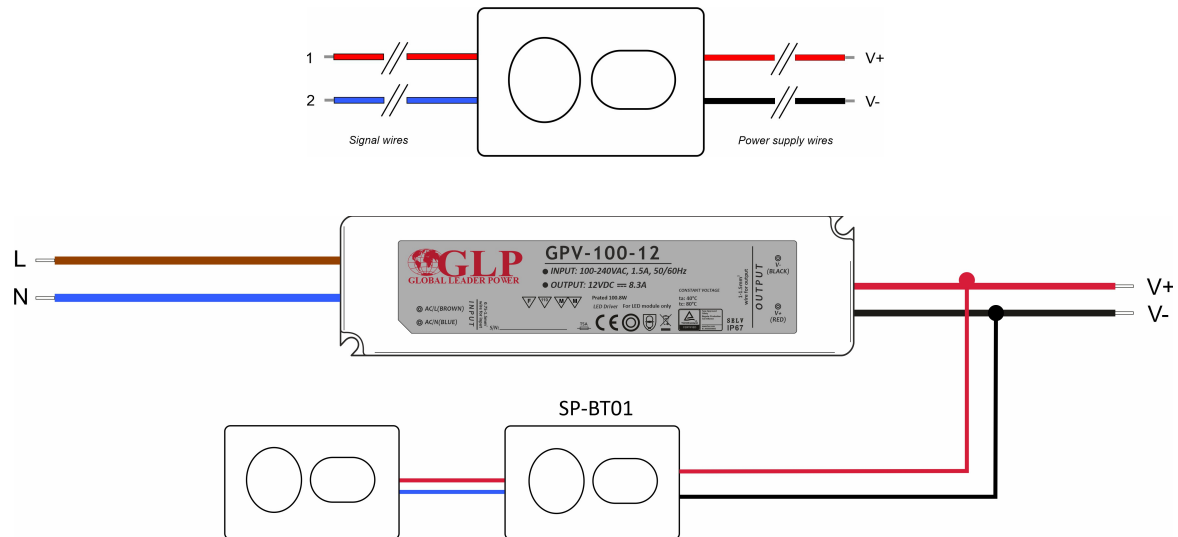


SP-BT01 Series

Bluetooth speakers for mirrors

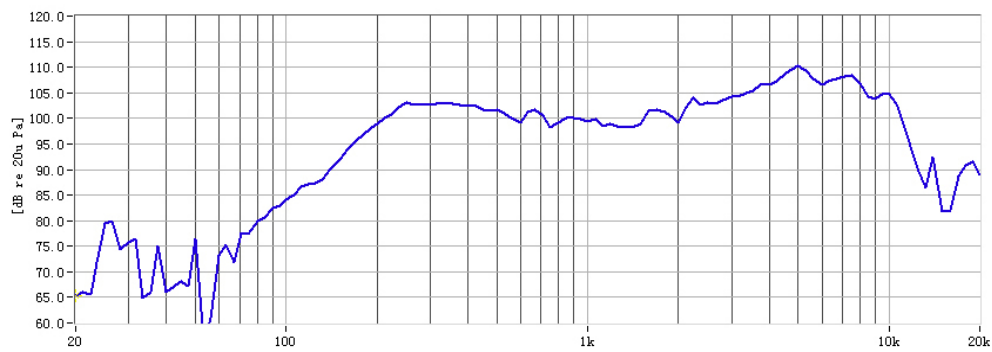


ELECTRICAL SPECIFICATION

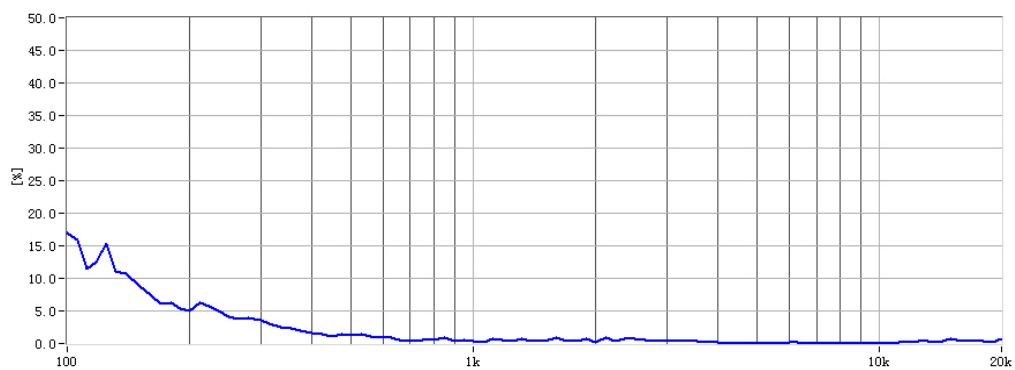


SPEAKER CURVES

FREQUENCY



DISTORTION



SP-BT01 Series

Bluetooth speakers for mirrors



IMPEDANCE

